

↑ Retain Big Trees

- Large trees disproportionately contribute to forest carbon stocks
- Legacy tree retention, crop tree release, or longer longer cutting cycles
- And can be a source future deadwood

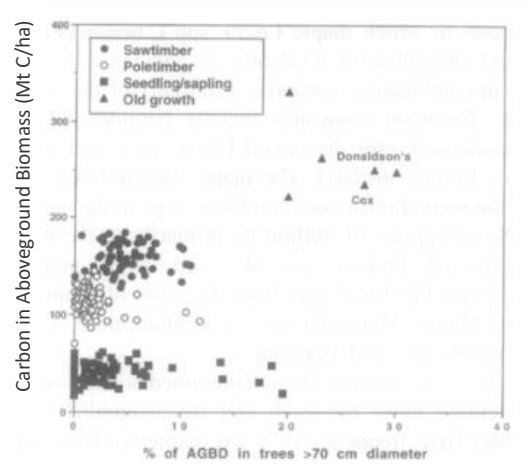
Benefits

- Keep more carbon on site
- Large trees, which may also be old, are a source of strong locally-adapted genetics -- good practice to keep oldest trees on site if possible
- Adds to structural complexity
- Biodiversity

Considerations

- May reduce economic value of harvest
- If trees are to be permanent retention, consider ways to designate them as legacy trees
- When paired with strategies to promote younger age classes, can help maximize storage and sequestration

Sites with high biomass generally have more large trees



Source: Brown et al. (1997)

