
An Introduction to the Family Forest Carbon Program

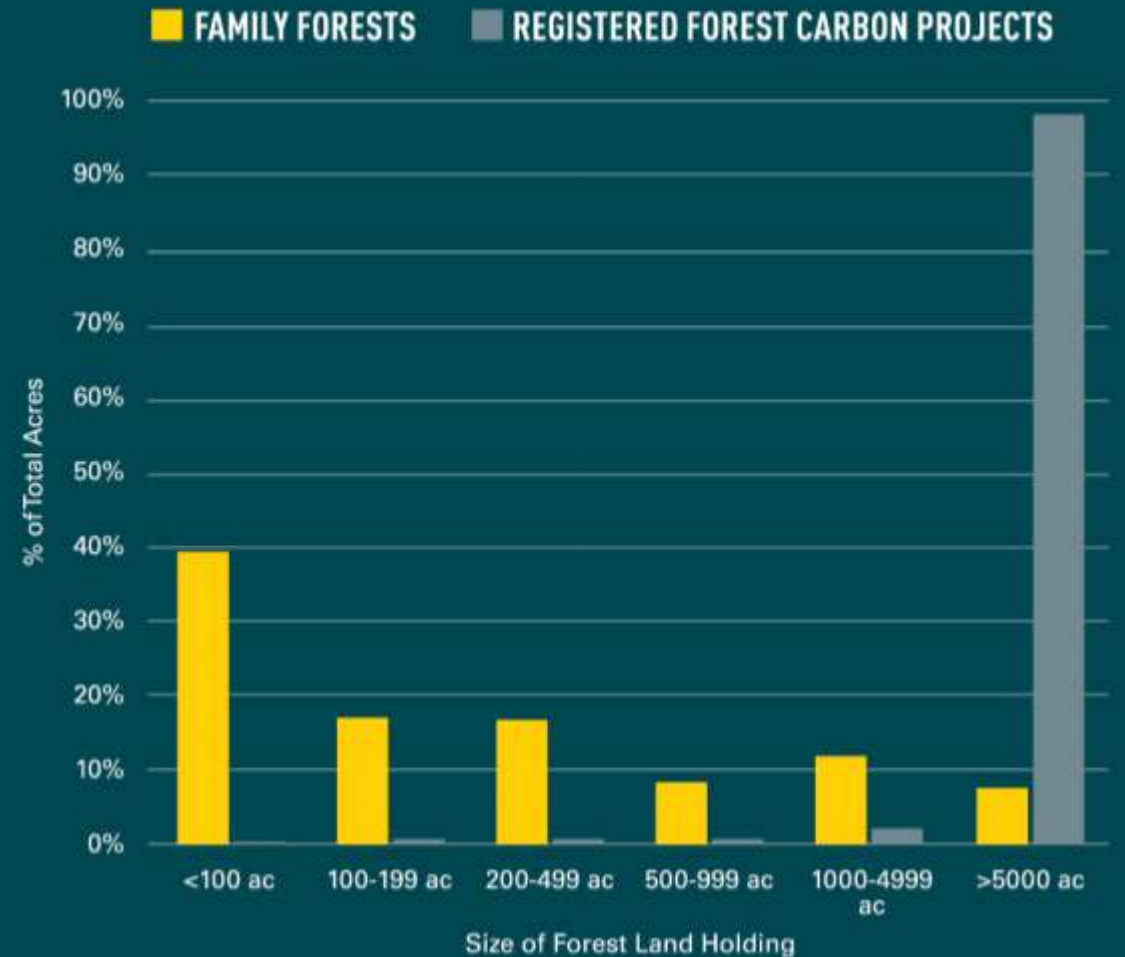
The Nature
Conservancy 
Protecting nature. Preserving life.



American Forest Foundation

Forest Carbon Projects vs. Forest Ownership Size

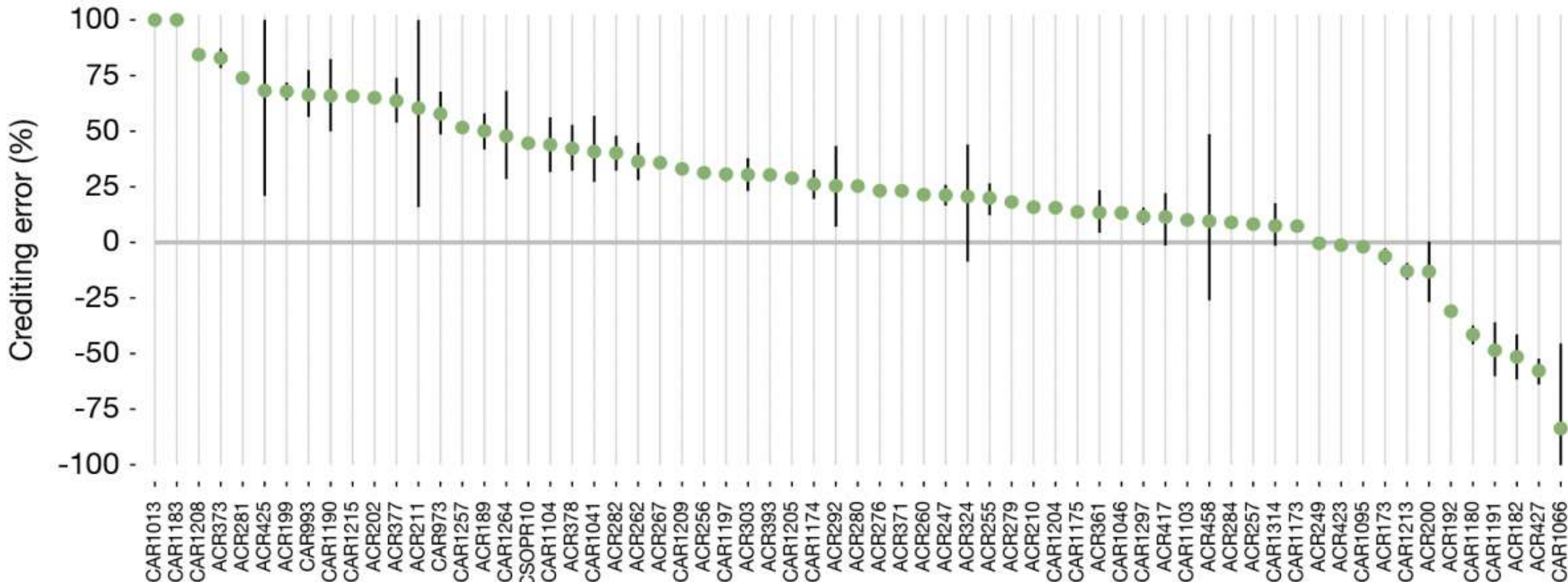
Ownerships less than 1,000 acres account for 80% of the acres, **but less than 1% of the forest carbon projects.**



Modeled approaches to carbon accounting may lead to overestimation of mitigation

B

Total overcrediting: 29.4% (90% CI: 20.1% to 37.8%)



General Structure

Landowner incentive payments result in a change in forest management

Those changes result in an increase in carbon storage compared with non-enrolled land

That additional carbon storage is quantified and sold as carbon credits that fund the program



What Makes the FFCP Different?

'TRADITIONAL' FOREST CARBON PROJECTS	FAMILY FOREST CARBON PROGRAM
Pays for stored and sequestered carbon	Pays landowners to implement specific practices
Purely a financial transaction	Provides technical assistance and customized forest management plan
High costs for monitoring on a per-property basis	Monitors practice implementation on every property; monitors carbon values on a landscape level
Additionality determined from modeled baseline	Additionality determined from observed baseline, updated with every verification cycle.

Eligibility

Private ownership

Minimum of 30 acres

Northern hardwood forest type

Available for harvest

No prior carbon project





Healthy Forests for our Future:

A Management Guide to Increase Carbon Storage in Northeast Forests



About the Guide



Purpose

Enable landowners and foresters to make climate-smart decisions

Contents

10 forestry practices to:

- Increase or maintain carbon stored in the forest within 20 years while
- Building the forests' ability to 'bounce back' from climate change impacts

Protect forests

1. Avoid forest loss

Grow new trees and forests

2. Green developed areas
3. Reforest
4. Plant trees to increase forest stocking

Reduce stressors

5. Remove invasive vegetation
6. Protect seedlings and saplings from deer browse

Manage forests

7. Increase time between harvests
8. Establish forest reserves
9. Create gaps to promote regeneration
10. Retain more carbon in a thinning

About the Guide



Purpose

Enable landowners and foresters to make climate-smart decisions

Contents

10 forestry practices to:

- Increase or maintain carbon stored in the forest within 20 years while
- Building the forests' ability to 'bounce back' from climate change impacts

Protect forests

1. Avoid forest loss

Grow new trees and forests

2. Green developed areas
3. Reforest
4. Plant trees to increase forest stocking

Reduce stressors

5. Remove invasive vegetation
6. Protect seedlings and saplings from deer browse

Manage forests

7. Increase time between harvests
8. Establish forest reserves
9. Create gaps to promote regeneration
10. Retain more carbon in a thinning

How It Works for the Landowner



1

Find your property on our secure online platform.



2

Connect with an FFCP representative to answer your questions.



3

Submit your management plan and project planning form, OR get a site visit from a forester, paid for by FFCP.



4

Review and sign your FFCP Agreement.



5

Receive your first payment soon after signing.



6

Hire a professional to complete and document practices.

- 1. Grand Isle (VT)
- 2. Franklin (VT)
- 3. Orleans (VT)
- 4. Essex (VT)
- 5. Chittenden (VT)
- 6. Lamoille (VT)
- 7. Caledonia (VT)
- 8. Addison (VT)
- 9. Washington (VT)
- 10. Orange (VT)
- 11. Rutland (VT)
- 12. Windsor (VT)
- 13. Bennington (VT)
- 14. Windham (VT)
- 15. Washington (NY)
- 16. Rensselaer (NY)
- 17. Columbia (NY)
- 18. Dutchess (NY)

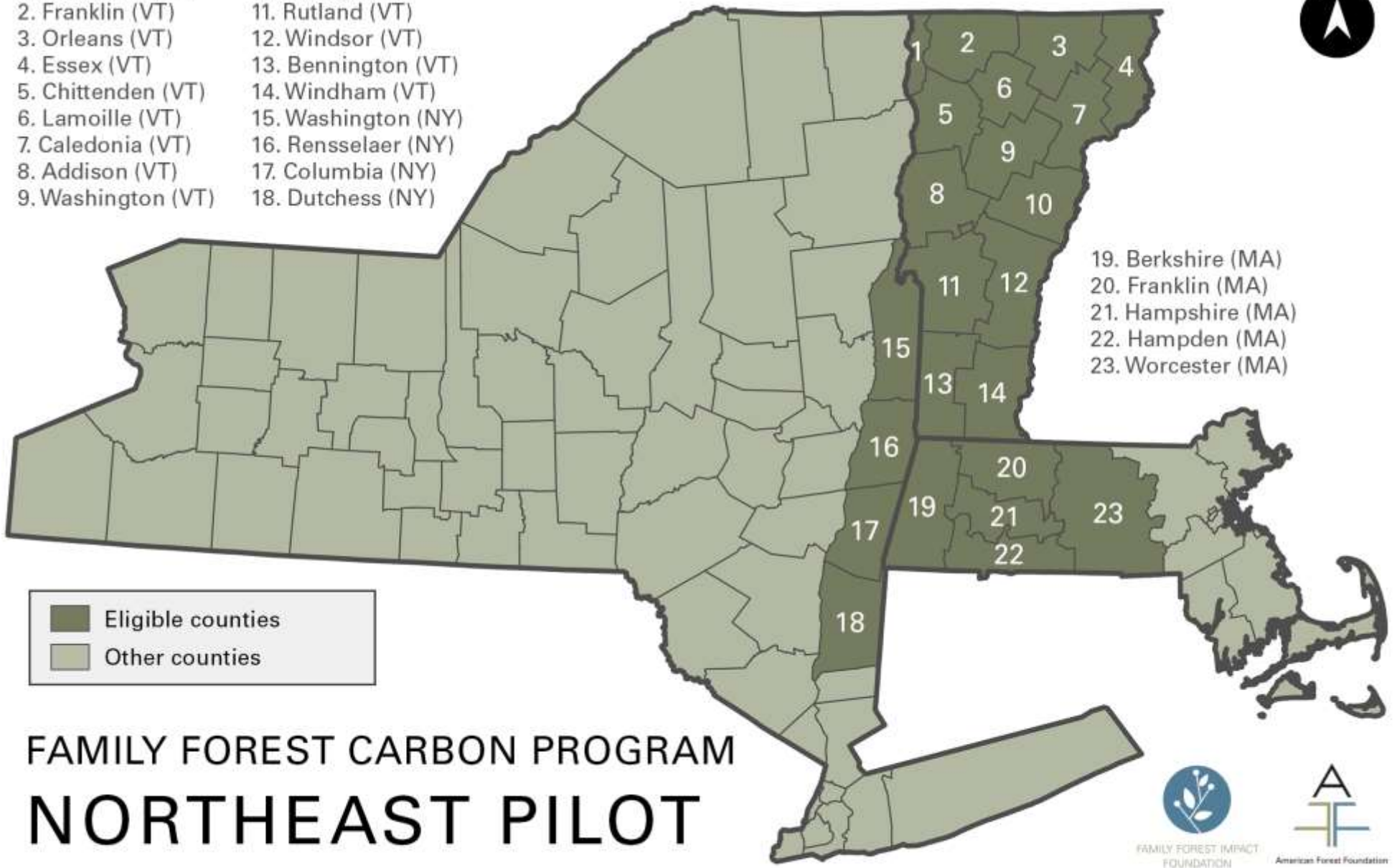
- 19. Berkshire (MA)
- 20. Franklin (MA)
- 21. Hampshire (MA)
- 22. Hampden (MA)
- 23. Worcester (MA)

- Eligible counties
- Other counties

FAMILY FOREST CARBON PROGRAM NORTHEAST PILOT

County boundaries sourced from the United States Census Bureau in 2021.

Last updated: Oct. 29, 2021, by Lynn Riley, lriley@forestfoundation.org



Let's Collaborate

Synergies between FFCP practices and other state programs and practices

Information sharing with landowners and consulting foresters

Opportunities for forester training

Provide feedback on practices and process

familyforestcarbon.org
rcampbell@forestfoundation.org



Thank You

familyforestcarbon.org
rcampbell@forestfoundation.org

The Nature
Conservancy 
Protecting nature. Preserving life.



American Forest Foundation

Management Rulebook

Total harvest less than 15% of total basal area

No high grading

Canopy gaps less than 20% of any harvested area

Canopy gaps smaller than 5 acres

Leave four big trees per acre



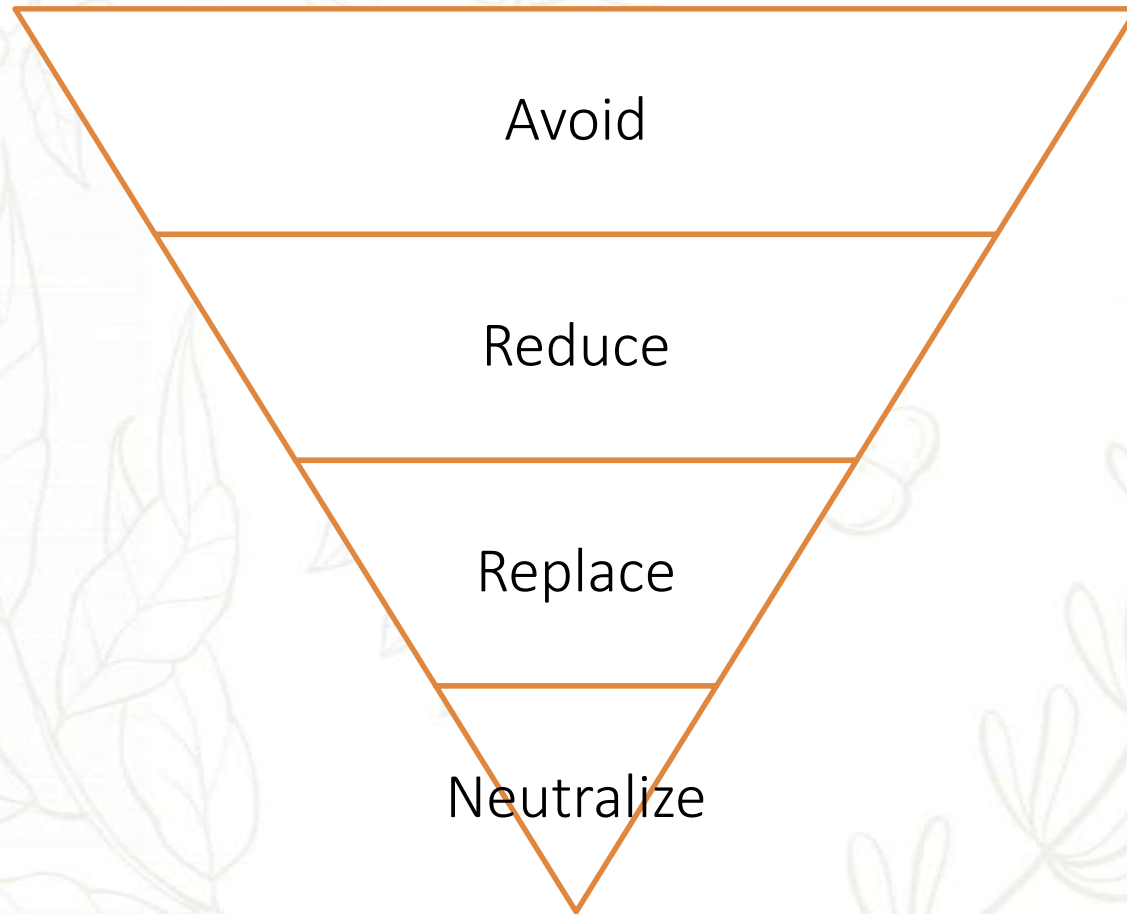
Grow Older Forests

Defer harvest for 20 years

NOT A PERMANENT RESERVE



Emission Reduction Hierarchy



Avoid energy use and/or emissions generation

Implement energy efficiency measures and redesign products and services to reduce emissions

Covert to renewable energy

Neutralize unavoidable emissions with carbon credits



CALCULATING PROGRAM IMPACT



-  FIA PLOT
-  FIA MATCHED PLOT
-  FFCP MONITORING PLOT
-  FFCP ENROLLED PROPERTY

